



# Governor's Task Force on Climate Change-Virtual Listening Session #4

## Oneida Nation's Agriculture and Food Sovereignty

June 9, 2020 at 6:00 p.m.



Patrick Pelky, Division Director  
Environmental, Health, Safety, Land &  
Agricultural Division

E-mail: [ppelky1@oneidanation.org](mailto:ppelky1@oneidanation.org)  
Phone: (920) 819-4581



# ONEIDA NATION

Eau Claire

La Crosse

Madison

Milwaukee

Green Bay

# Land Use Today

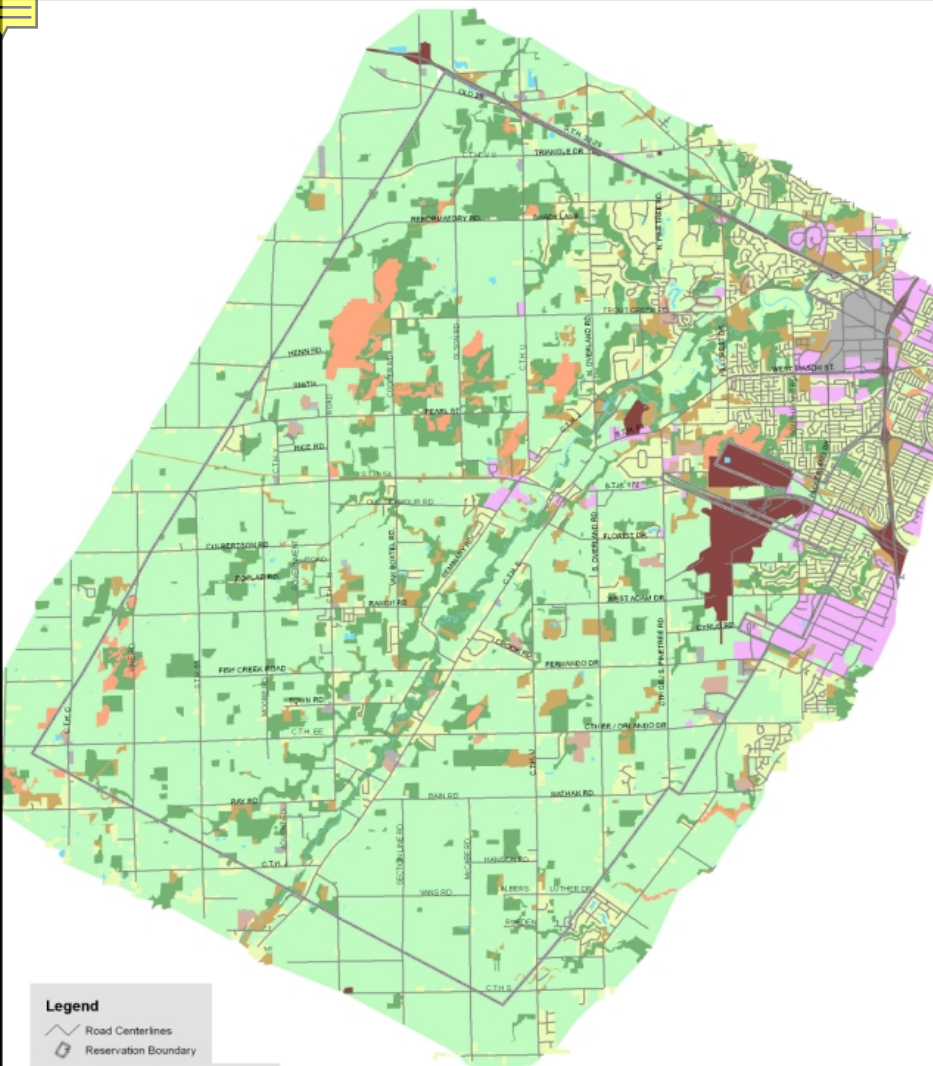
Agriculture

Forests

Wetlands

Commercial/Services

Transportation/Communications/  
Utilities



## Legend

- Road Centerlines
- Reservation Boundary

## Land is Currently Being Used for:

- Agriculture
- Commercial and Services
- Forest Land
- Grassland
- Hydrology
- Industrial
- Quarries and Gravel Pits
- Recreational
- Residential
- Transportation Communications and Utilities
- Wetlands

NOTE:  
Map is a representation  
What the land is being used for as determined  
from the 2006 aerial photography interpretation.  
It does not represent Zoning or Tribal Land that has been  
through the LUTU process



GEOGRAPHIC LAND INFORMATION SYSTEMS  
N 703 Packerhead Drive  
Green Bay, Wisconsin  
(920) 496-2007

File: 2006 LandUse.mxd Date: 3-18-08 Revised: 07-31-09

1 inch = 7,000 feet



Source: Photography: April 24, 2006  
Coordinate System: Wisconsin State Plane, Central Zone  
Lambert Projection, U.S. Foot  
Horizontal Datum: NAD83  
Vertical Datum: NAVD83

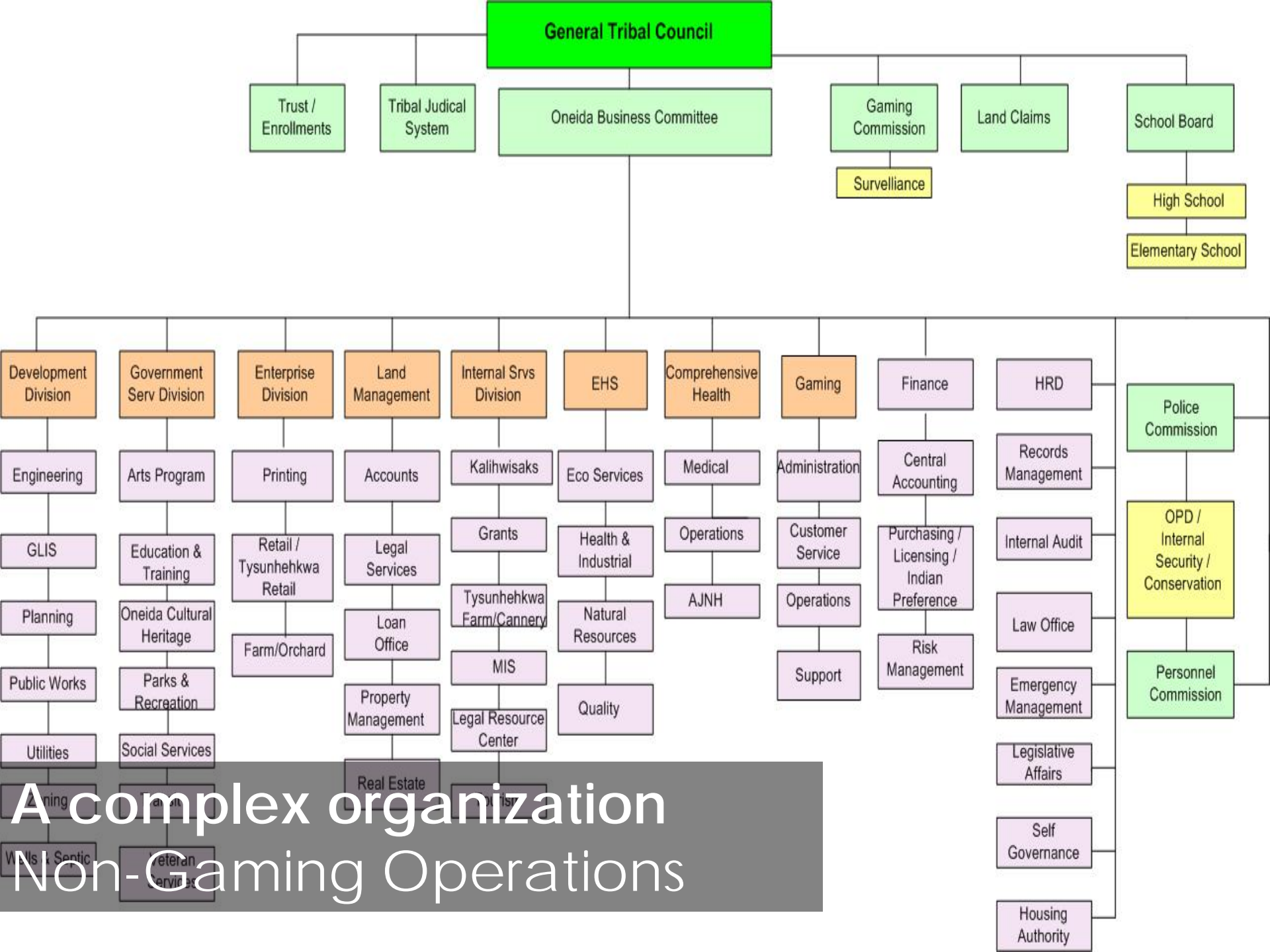


# About Oneida

- 2,700 employees
- Approximately 42% land ownership
- Main Casino & Bingo, Mason Street Casino, and six “One-Stop” convenience stores.

# About Oneida





A complex organization  
Non-Gaming Operations

# Input Sources

*o · náste?*

# Production/Processing

# Community Distribution



**Aquaponics**

**Individual:**  
Growers  
Wildlife Harvesters  
Gatherers  
Education



**Tsyunhekw<sup>^</sup>:**  
White Corn  
Produce  
Beef/Poultry/Eggs  
Education



**Oneida Nation Farm:**  
Buffalo  
Beef  
Crops/Produce



**Oneida Nation Orchard**



**Oneida Nation Cannery:**  
Value-Added Processing  
White Corn Production  
Individual Harvests  
Education



**External Meat Processing Facilities**

**Oneida Nation School System**



**Assistance Programs:**  
Emergency Pantry  
Distribution Center  
Elder Meal Site



**Oneida Nation Farmer's Market**



**Retail:**  
Oneida Market  
One Stops



**Direct to Households**



A good mind. A good heart. A strong fire.



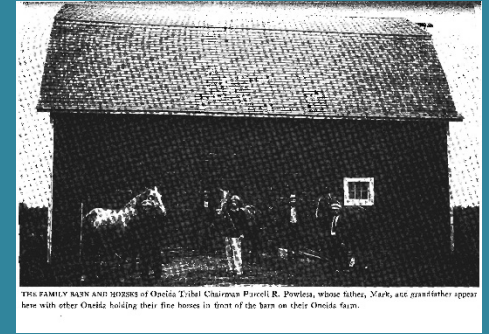
# Oneida History

- Oneida's have always been farmers. It's ingrained in our history & our culture.
  - American Revolution
  - Seven generation philosophy
  - Three Sisters
  - Ceremonies





# History



- In 1844 there were 722 Oneida's living here. They had 2,200 acres of land under cultivation, over one hundred horses, five hundred head of cattle, five hundred hogs, chickens and a few sheep.
- Today the Oneida Nation Farm manages 6,500 acres and is one of the largest cash crop operations in NE Wisconsin. With over 500 Point of Origin Black Angus Beef and 100 Bison.
- The Oneida **tsyunh#hkw** is an 83 acre certified organic farm that produces: Oneida white corn, beef, chickens, produce, berries, plants and much education. They also have a community cannery that is used to process much of their product and is open to the community.





# Oneida Community Integrated Food Systems



## OCIFS Mission

The Oneida Community Integrated Food Systems (OCIFS) entities are here as a **TEAM** to help families by housing a community food system that will include traditional food products and help **create a local economy** that will provide jobs, and promote and encourage long term solutions to farm and nutrition issues on the Oneida Reservation.



Oneida Farms



tsyunhehkwa Farm



Food Distribution Center



Oneida Apple Orchard



Oneida Retail

# Why is local food important?

- It takes the typical food item 1,500 to 2,400 miles to travel from farm to plate. A head of California lettuce shipped to Wisconsin requires 36 times more fuel energy just to transport than the caloric food energy it provides.
- Less petroleum used for shipping and reduced CO2 emissions.
- Local foods are fresher, tastier and more nutritious.
- \$1 invested locally creates a \$4 multiplier for the local economy, and in these times of economic turmoil, it is even more important!
- By buying locally you get competitive prices while helping to create new jobs.
- Demand for local fruit and produce helps to preserve valuable farmland.
- Of every \$100 spent on locally owned business, \$45 makes it back into the community, compared to \$14 back into the community from every \$100 spent at big-box stores.



# Why is local food important?

- The Center for Disease Control and Prevention estimates that **one-third of all American children born in the year 2000 will develop diabetes as a result of poor diet and lack of exercise.**
- For the first time in American history this generation will have a shorter life expectancy than their parents.
- No culture in the world pays less for food, per capita, and more on medicine. You can pay the doctor or pay the farmer.
- A store bought tomato today has 46% less vitamin A, 29% less iron and 58% less calcium than the tomatoes of 50 years ago. (USDA data, 2009)
- 5,200 deaths each year in America are due to food born illnesses. (Center for Disease Control, 2009)
- The last 30 years the average American has increased their sugar intake by 30% and most of this is in beverages.





# OCIFS Strategies



**Strategy #1** Educate the Oneida community about food, agricultural opportunities, nutrition and health risks.

**Strategy #2** Integrate Oneida and locally produced foods into the Oneida community and institutions.

**Strategy #3** Plan Growth and Development.



# Cannery



- Providing local, healthy, and safe value-added products from our Nation's food systems to the community through a multitude of outlets-450 lbs of white corn processed weekly.
- Providing community workshops to promote and educate the community on value-added products and promoting food sovereignty and security.
- Processing for individual community members to meet individual community needs for food security and providing households with safe and healthy value-added products.
- Providing In-Home technical processing training to ensure community members are processing foods safely (wild game, wild crafting, home canning, corn processing with a step-by-step virtual guide).



# Tsyunhehkwa Farm



- Community Garden Project to create an environment for community members to gather foods for their own household usage under emergency circumstances
- Estimation of around 1,500 pounds of vegetable production.
- Seed and Plant Distribution and Garden Tilling Services to encourage and promote community members to grow their own healthy foods.
- Growing White Corn to make healthy traditional foods available to the community. Also we donated 50 lbs of white corn to the Oneida Pantry monthly from March-May.
- Raising grass fed beef to provide a healthy local protein source available to the community. Also one animal per month delivered to Oneida Market (revenue source).
- Raise chickens for egg production estimate 100 eggs produced for community per day
- CSA product boxes to provide healthy and nutritious foods to the community.



# Oneida Nation Farm & Orchard



- Healthy herd management (about 550 Black Angus Beef and 150 bison) to provide healthy beef & bison products for Oneida and surrounding communities .
- Planted 3 acres of sweet corn to provide healthy sweet corn for the Oneida community.
- Orchard has about 36 acres of apple trees to provide fresh, locally produced apples for the Oneida community.
- Orchard planted 10 acres of squash and pumpkins to provide healthy/cultural food products that the community can enjoy.
- Ensure healthy pear trees to provide fresh, locally produced pears for the Oneida community.





- Aquaponic
- Farmers Market
- Food Pantry
- Food Distribution



-Aquaponics system provides about 1,600 lbs. of fresh lettuce and numerous number of tilapia fish to the Oneida Schools for much healthier foods for youth leading to increase in health and behavior.

-The Oneida Farmers Market not only provides a large variety of health produce, eggs, honey, maple syrup, apples, etc. They also provide educational opportunities for the community on the benefits of healthy foods on lifestyle. However, 2020 is different.

-The Oneida Emergency Food Pantry has been open a little over two years. Within those two years we have served 578 families with 1,694 individuals in those families. They have collaborated with various outside entities to provide food for those in need.

-Food Distribution continues to provide USDA Foods to low income families. Besides Oneida they serve 5 counties, Brown, Outagamie, Door, Kewaunee, and Manitowoc.

# Educating our community

- **Hands-on Demonstrations / Workshops**
  - a. Growing Gardeners Workshops
  - b. Youth Day on the Farm event
  - c. Demos at the Oneida Farmers' Market
  - d. Youth Entrepreneur Program
  - e. Oneida Falling Leaves 4-H projects



# Integrating Local Foods

- **Farm to School initiative**
  - a. Use Oneida 4-H as buyers group
  - b. Collaborate with Live54218
  - c. Expand cold storage capabilities



# Integrating Local Foods

- **Increase local food production**

- a. Research markets for local foods
- b. Encourage/assist community entrepreneurs
- c. Connect the dots (production, processing, marketing)



# Planned Growth / Development

- **Retail Expansion for products**

- a. Offer OCIFS Gift Boxes
- b. Offer products in Hwy 54 One Stop
- c. Oneida Market opens 501 Packerland Drive



# Planned Growth / Development

- **Events to promote growth**
  - a. tsyunh#hkw< Harvest & Husking Bee
  - b. Oneida Farmers' Market Bashes
  - c. Big Apple Fest

**Come Enjoy some Old Time Family Fun!**

**FREE**

**BIG APPLE FEST**

**SATURDAY, SEPTEMBER 22**  
10 am - 4 pm

**Pie Contest**  
Grand Champion \$200  
Best in Show \$100  
Best Tasting Crust \$100  
Best Diabetic Apple Dessert \$100

For more details call 496-5020  
All entries must register by 1PM

**Cultural Heritage Log Home Restoration**

**Schedule of Events:**  
10:00 AM Grounds Open  
- Farm Animals - Kids Crafts  
- Farmers Market - Cultural Area  
- Demonstrations - Old Time Games  
- Horse & Wagon Rides (both locations)

11:00 AM Horse Show w/ Cheyenne Rope Tricks  
11:40 AM Horse & Hitching Demonstration  
12:30 PM Meet Dog & Herd Cooking Show  
1:15 PM Rha the Tick Horse  
2:15 PM Horse Show w/ Cheyenne Rope Tricks  
3:00 PM Musical Entertainment by: Don & Lynn Derry with Joe Walon & Pie Judging Contest (under big tent)

Enter Here for Parking

Oneida Apple Orchard  
1 mile west of Green Bay on Hwy 54

Enter Here for Parking

**ONEIDA FARMER'S MARKET**

**B\*A\*S\*H**

**ONEIDA Farmer's Market**

FRUITS VEGETABLES PICKLES HONEY HOMEMADE PRESERVES

**THURSDAY, JULY 19**

**NOON-6PM**

ARTS AND CRAFTS FLOWERS PLANTS BRATS & BURGERS

**Location:**  
N7332 WATER CIRCLE PLACE  
(next to water tower)

Noon-5:30 pm -  
**Various Adult and Youth Activities**

**Lacrosse Demonstration:**  
Come learn about this traditional Haudenosaunee/Iroquois sport.

**Straw Bale Raised Garden Bed:**  
Learn how to make an inexpensive raised garden bed.

**Horse Drawn Wagon Ride:**  
Back to the land - wildlife tour. Take a quiet ride through the Fox Tails area just north of the Farmer's Market.

3-6 pm  
**Music by Blues Talk**

**COME ENJOY GOOD FOOD, MUSIC AND GAMES!**

www.oneidation.org/octfs • 920-496-7423

*You are invited to*  
**shakotihatahslu-nihe?**  
*(they prepare the fields for them)*

*for our*  
16th Annual  
**HARVEST & HUSKING BEE**

Please join us to take care of  
áhsana?tektahnu-téle *(Three Sisters)*

**Sat., Sept. 26-Fri., Oct. 2, 2009**  
9:00 a.m.-5:00 p.m.

tsyunhéhkwá Agricultural Site  
139 Riverdale Drive  
Oneida, WI 54155

For more information contact Ted Skenandore at 920-869-2718.



# Oneida food self-sustainability / production

- Black Angus Beef
- Free range chickens
- Apples
- Strawberries
- Raspberries
- Blackberries
- Rhubarb
- Cantaloupe
- Squash
- Watermelon
- Pumpkins



- Buffalo
- Eggs
- Pears
- Onions
- Asparagus
- Potatoes
- Radishes
- Cucumbers
- Peas
- Gourds
- Herbs



Pay the doctor or pay the farmer

## Food Security

**Food Security** exists when all people, at all times, have physical and economic access to sufficient, safe and nutritious food that meets their dietary needs and food preferences for an active and healthy life.

A good mind. A good heart. A strong fire.



### Supporting Food Security - Food Action Plan

Project	Activity
Community Garden	Allow Access to 6 Acres of Tillable Land for Gardens
Community Garden	Allow Access to Equipment Needed to Garden
Community Garden	Allow Designated Community Members to Harvest any of the 32 Berry Plants
Community Garden	Plant cool season crops
Community Garden	Plant regular season crops
Community Garden	Start seeds for planting community garden
Indigenous Foods	Create an public outreach campaign to notify community of the resource and organize distribution
Indigenous Foods	Distribution of seeds and plants
Indigenous Foods	Start seeds for planting and distribution
Local Food	Create an public outreach campaign to notify community of the resource and organize distribution
Local Food	CSA Agreements for Product Boxes
Local Food	Egg collection and distribution
Local Food	Eggs available by fall
Local Food	Garden Tilling service
Local Food	Grass fed beef Becks Inc picks up for processing
Local Food	Grass fed beef meat delivery to pantry
Local Food	Local Food Provide Fresh Fish to the Schools
Local Food	Provide Fresh Lettuce to the Schools
Local Foods	8,000 Extended Growth Walleye for Osnuhsa and Quarry Park
Local Foods	Fatheads for Osnuhsa
Local Foods	Fisheries Surveys/Electroshocking
Local Foods	Planting 3,000 Brook Trout Fingerlings in Trout Creek
Local Foods	Stock Osnuhsa 1,000 Rainbow trout

### Supporting Food Security - Sportsman's License Issued 2019

**981**

### Supporting Food Security Agricultural Acreage Purchased FY20

**202.71**

### Supporting Food Security Agricultural Leased Acres

**5,288.50**

### Supporting Food Security - Pounds of White Corn Processed 2019

**11858**

### Supporting Food Security - Garden Tilling

Customers Served	Square Feet of Garden Tilled
------------------	------------------------------

**71**

**71920**

### Supporting Food Security - Number of Oneida Households Recieving Seeds and Plants

**123**

### Oneida Nation Farm - Cattle - June 2020

Year to Date Donated 2 head - Oneida Food Pantry

### Oneida Nation Farm Buffalo - June 2020

Year to Date Donated 5.5 head - Oneida Food Pantry

### Supporting Food Security - Cannery Processing Costs Waived during COVID 19

COVID Use	Value
Corn Processing	3,736.50
Equipment Usage	320.00
Meat Grinding	96.00
<b>Total</b>	<b>4,152.50</b>

### Supporting Food Security Managing Oneida Food Resources

Agricultural Product Order

Aquaponics Supplies

Beef Production & Sales



## Food Sovereignty

**Food Sovereignty** is the right to define the agricultural, labor, fishing, food and land policies that are ecologically, socially, economically and culturally appropriate. It is the primacy of people's and community's rights to food and food production, over economic concerns.

A good mind. A good heart. A strong fire.



### Supporting Food Sovereignty - Community Garden Projects

#### Activity

Chaos garden create an public outreach campaign to engage community and encourage maintenance and utilization of the resource

Chaos garden monitor progress and harvest availability

Chaos garden planting

Plant 3 acres of Sweetcorn

### Supporting Food Sovereignty - Education and Outreach

#### Activity

Food Sovereignty Outreach

Presentations

Provide Community Workshops

### Supporting Food Sovereignty - Local Foods

#### Activity

Cultural Educational Outreach

Educational Outreach

Plant 8 to 10 Acres of Squash & Pumpkins

Processing for Individual Community Members

Provide an Outlet for Fresh Local Foods

Agricultural Leases that support Food Sovereignty

# 1,186.89

Acres

### Supporting Food Sovereignty - Indigenous Foods and White Corn

#### Activity

Wild Rice site prep

Wild Rice processing

Wild Rice planting

Wild Rice outreach and education

Wild Rice harvesting

White Corn Processing

Sweetgrass Harvest

Processing of Value-Added Products for Organizational Needs

Plant Community White Corn Plot

Organize community volunteers for white corn activities

Number 6 Harvest

Increase Harvesting Bag and Possession Limits

Husking Bee

Green Corn Harvest

Food Plot and Habitat Enhancement

Distribution of Value-Added Products

Create an public outreach campaign to engage community and solicit volunteers

Amend Pheasant Stocking Plan Acquire Straight Run Purchase

3 - Sisters Planting

### Supporting Food Sovereignty Deer Harvest 2019

# 512

### Supporting Food Sovereignty Spring Turkey Hunt

Total Harvest

Number of Registered Hunters

404

322

### Supporting Food Security Managing Oneida Land & Natural Resources

#### Activities or Services

Aquatic Invasive Species Assess

Aquatic Invasive Species Control

Aquatic Invasive Species Control Followup

Environmental Impact Review (NEPA)

Evaluation and monitoring of threatened or endangered species

Fee to Trust

Forestry Management Plan

Hazard Tree Assessment

Hazard Tree

Hemp Program

Hemp Technical Assistance

Land Restoration and Buffers

Land Use Review 1

Land Use Review2

Natural Resource Technical Assistance

NonHazard Tree Assessment

Oneida Farmers Market

Reforestation Project

Restoration (Surface Water)

Restoration (Wetlands)

Surface Water Technical Assistance

Survey Technical Assistance

Tree Cutting Permit

Wetland Technical Assistance

### Supporting Fovereignty - Food Production 2020 Est

Products Produced    Projected Output 2020    Unit

Berries	435 Quarts	
Eggs	2800 Eggs/Month	Grass Fed Beef
	6000 Pounds	
White Corn	12000 Pounds	

## Food Processing and Safety Supporting Sovereignty

**Food Safety** - The handling, preparation and storage of food to prevent food-borne illness.

A good mind. A good heart. A strong fire.



### Supporting Food Safety and Sovereignty with Oneida

Activity or Service	Count of Service
Food Service License	1
Government Services and Administration	2
Food Service Complaint	3
Food Handler Class Delivered	8
Drinking Water Quality Interpretation	9
Food Handler Certification	13
Food Safety Outreach & Education (NOT Food Safety Classes)	16
Food Service Inspection	26
<b>Total</b>	<b>78</b>

### Food Processing and Safety Supporting Sovereignty

Project	Activity
Education and Outreach	In-Home Technical Processing Training
Indigenous Foods	Demonstrations
Indigenous Foods	Educational Outreach and Hands on DIY Processing
Indigenous Foods	Processing Locations for Game Harvest
Local Food	Oneida Food Safety Training for Food Handlers
Local Food	Oneida Food Service Code Cottage Food Amendment Exemptions
Local Food	Safety Standards Assurance Checks
Public Health	Public Health Support for Operation Strategies (including during Public Health Crisis)

### Supporting Sovereignty - Processed Foods (Quarts) 2019

B&B	Blackberry	Blueberry	Cherry	G Salsa	Pickles	R Salsa	Raspberry	Straw/Rhubarb	Strawberry	Triple Berry
260	390	56	58	182	816	78	486	58	424	

### Supporting Sovereignty - Food Processing Fresh Food 2019

Beef Chili	qts	Berry Mush	qts	Buffalo Chili	qts	Corn Bread	units	Corn Soup	qts	Strawberry Drink	qts
140				56		238		90			76
				1748							
AP flour	CM flour	Corn Bread flour	Corn Bread Flour #1	Corn Bread Produced (loaves)	dehy	MF #1					
30	790	3414	284	5366	6298	500					

Oneida Nation Farm - Cattle - June 2020  
441 head (various stages of growth)

Oneida Nation Farm Buffalo - June 2020  
136 head (various stages of growth)

### Supporting Food Processing and Safety Supporting Sovereignty - Cannery Services Available

Corn Processing
Equipment Usage
Meat Grinding

# Healthy Soils

After: Erosion control basin



Before: Gully near Trout Creek



# Grassed Waterway Projects



After Grassed  
Waterway  
Construction



Before Grassed  
Waterway  
Construction